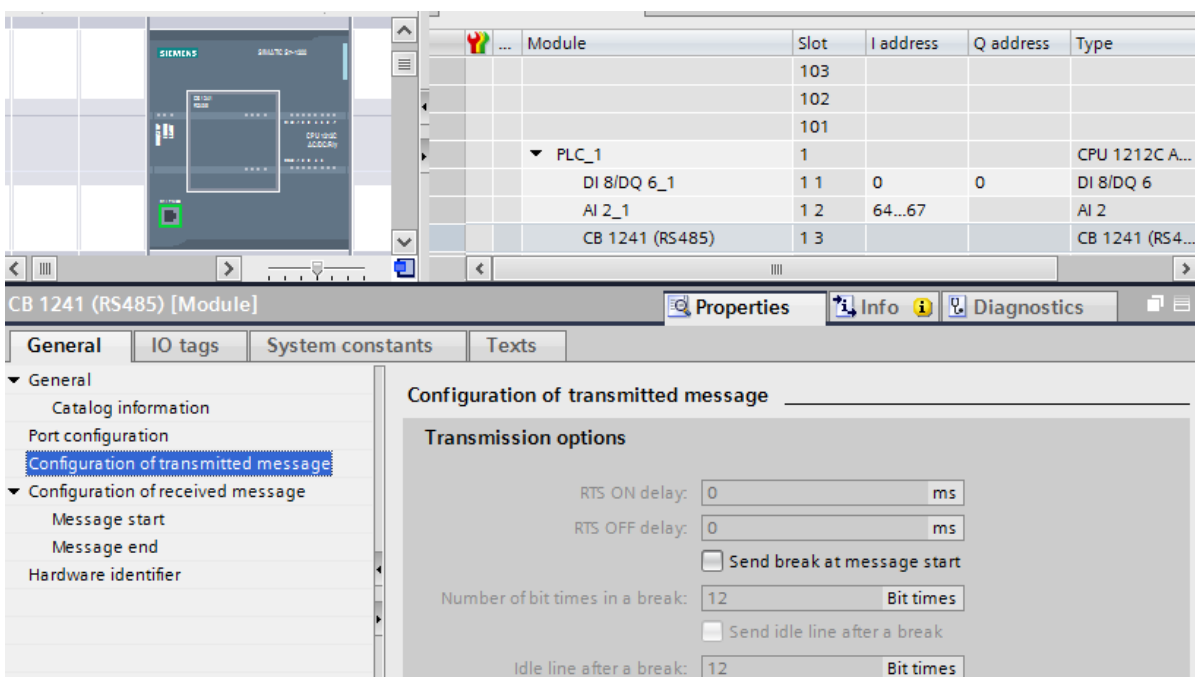
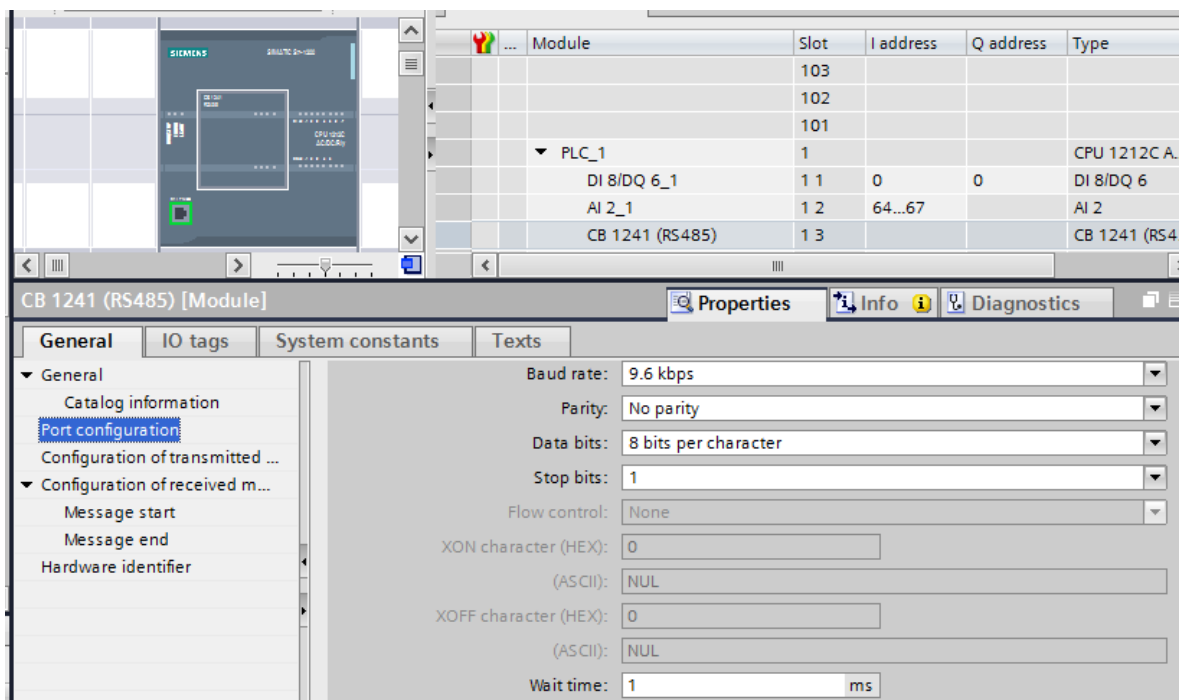
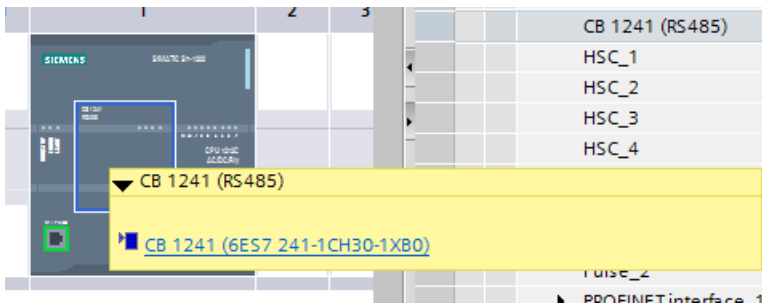


# Konfiguracja komunikacji przez RS485 z odtwarzaczem MP3.



Module

Module	Slot	I address	Q address	Type
	103			
	102			
	101			
PLC_1	1			CPU 1212C A...
DI 8/DQ 6_1	1 1	0	0	DI 8/DQ 6
AI 2_1	1 2	64...67		AI 2
CB 1241 (RS485)	1 3			CB 1241 (RS4...

CB 1241 (RS485) [Module] Properties Info Diagnostics

General IO tags System constants Texts

General

- Catalog information
- Port configuration
- Configuration of transmitted message
- Configuration of received message
  - Message start
  - Message end
  - Hardware identifier

Message start

- Start on any character
- Start on special condition
  - Recognize message start with broken line
  - Recognize message start with idle line
  - Recognize message start with single character

Idle line time: 40 Bit times

Message start character (HEX): 7E

Module

Module	Slot	I address	Q address	Type
	103			
	102			
	101			
PLC_1	1			CPU 1212C A...
DI 8/DQ 6_1	1 1	0	0	DI 8/DQ 6
AI 2_1	1 2	64...67		AI 2
CB 1241 (RS485)	1 3			CB 1241 (RS4...

CB 1241 (RS485) [Module] Properties Info Diagnostics

General IO tags System constants Texts

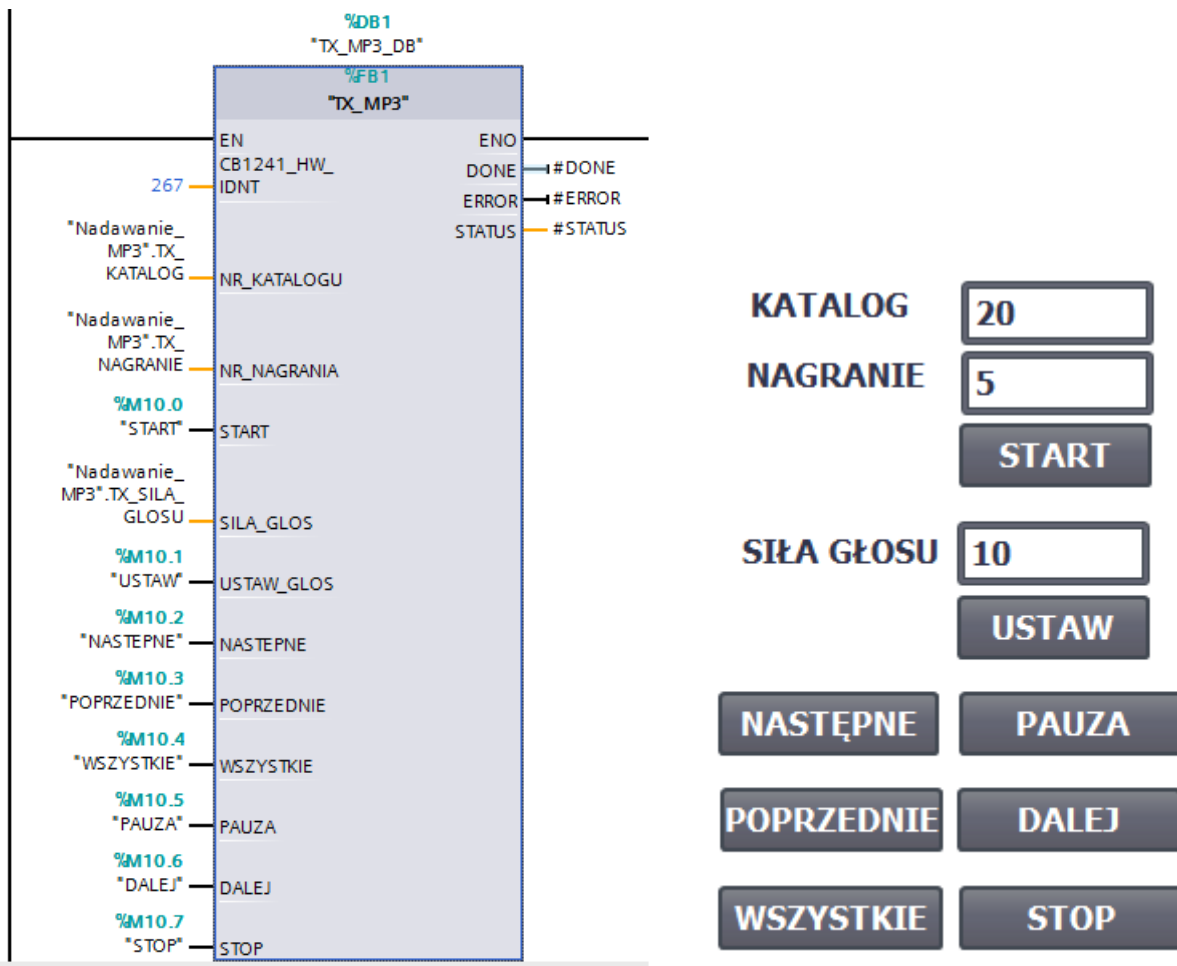
General

- Catalog information
- Port configuration
- Configuration of transmitted message
- Configuration of received message
  - Message start
  - Message end
  - Hardware identifier

Message end

Define message end conditions

- Recognize message end by message timeout
  - Message timeout: 200 ms
- Recognize message end by response timeout
  - Response timeout: 200 ms
- Recognize message end by inter-character timeout
  - Inter-character gap timeout: 12 Bit times
- Recognize message end by maximum length
  - Maximum length of message: 10 bytes
- Read message length from message



Wszystkie wejścia reagują na zmianę sygnału sterującego z 0 na 1.

Numeracja katalogów : 01 – 99

Numeracja nagrań: 001 – 255

Ustawianie siły głosu: 0 - 30

WSZYSTKIE – start odtwarzania nagrań z karty w kolejności wgrania plików, niezależnie od podziału na katalogi.

RS485 > PLC_1 [CPU 1212C AC/DC/Rly] > Program blocks > Nadawanie_MP3 [DB3]					
Nadawanie_MP3					
	Name	Data type	Start value	Retain	Accessible f...
1	Static			<input type="checkbox"/>	<input type="checkbox"/>
2	TX_KATALOG	USInt	1	<input type="checkbox"/>	<input checked="" type="checkbox"/>
3	TX_NAGRANIE	USInt	1	<input type="checkbox"/>	<input checked="" type="checkbox"/>
4	TX_SILA_GLOSU	USInt	30	<input type="checkbox"/>	<input checked="" type="checkbox"/>